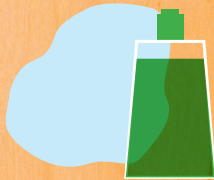


Cleaning Tips

What to use
Dos and Don'ts



Cleaning wood, melamine and MDF

Keeping furniture clean in the nursery and classroom now seems more important than ever. Here are some simple tips to help you and to help keep your equipment looking its best.

Do

- ✓ Clean surfaces with slightly damp microfiber or leather cloths.
- ✓ Use a mild solution of washing up liquid.
- ✓ Use antibacterial surface wipes.
- ✓ Test cleaning materials in an inconspicuous area first if you are unsure.

Don't

- ✗ Use too much water or saturate items.
- ✗ Use bleach, ammonia or other strong and abrasive cleaners.
- ✗ Scrub surfaces as this can damage and roughen the finish.
- ✗ Worry if natural products like wood change colour over time.